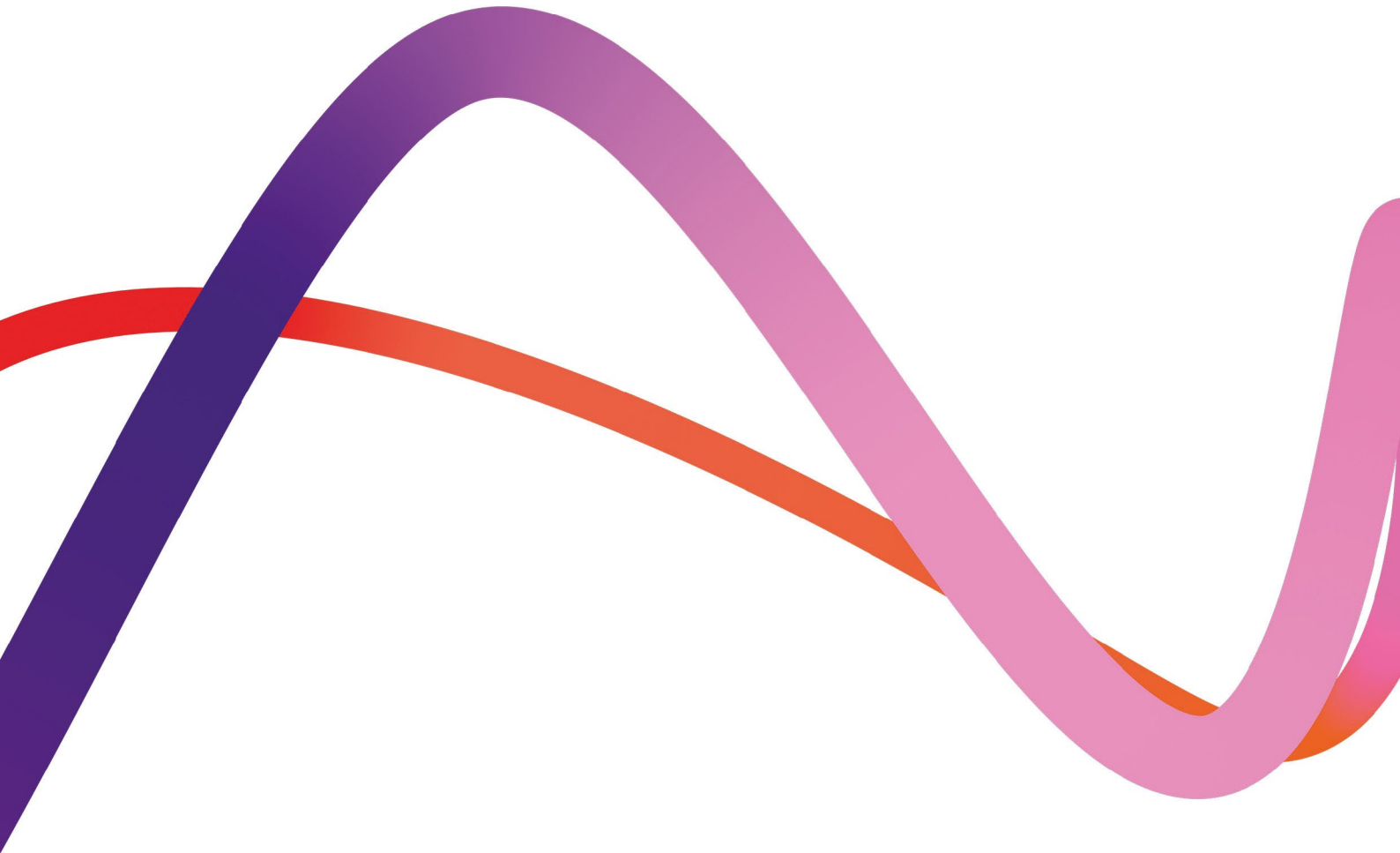


# Medworth Energy from Waste Combined Heat and Power Facility



PINS ref. EN010110  
Document Reference: Vol 6.3  
Revision 1.0  
June 2022

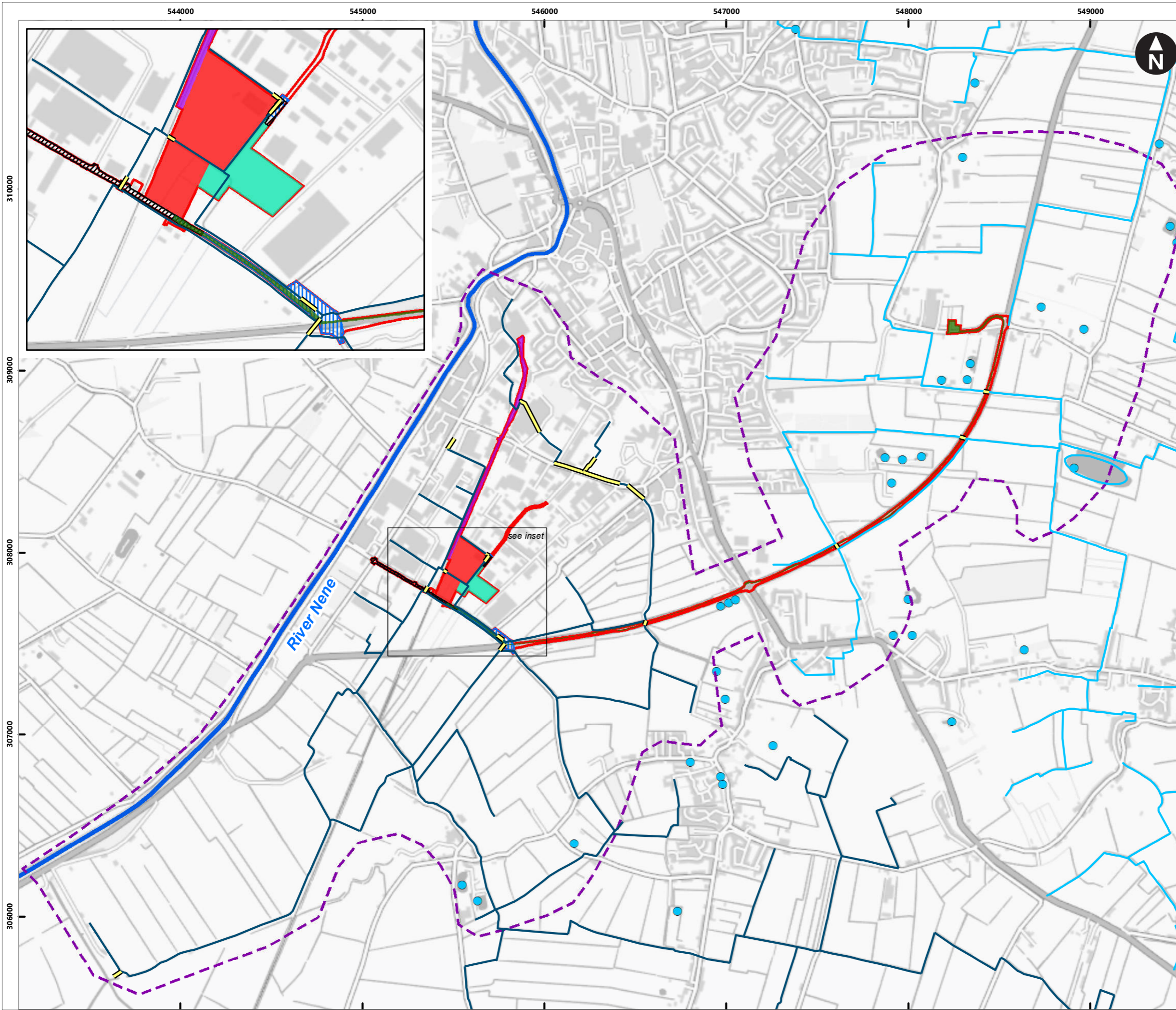


## Environmental Statement Chapter 12 Hydrology Figures

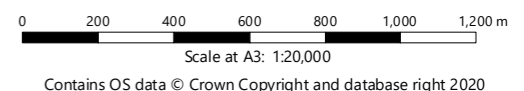
Regulation reference: The Infrastructure  
Planning (Applications: Prescribed Forms  
and Procedure) Regulations 2009  
Regulation 5(2)(a)

**We inspire  
with energy.**

H:\Projects\41310 Wisbech\Design\_Technical - G:\Drawings\ArcGIS\Workspaces\41310-Shr418\_v2.mxd Originator: jacqui.parkin

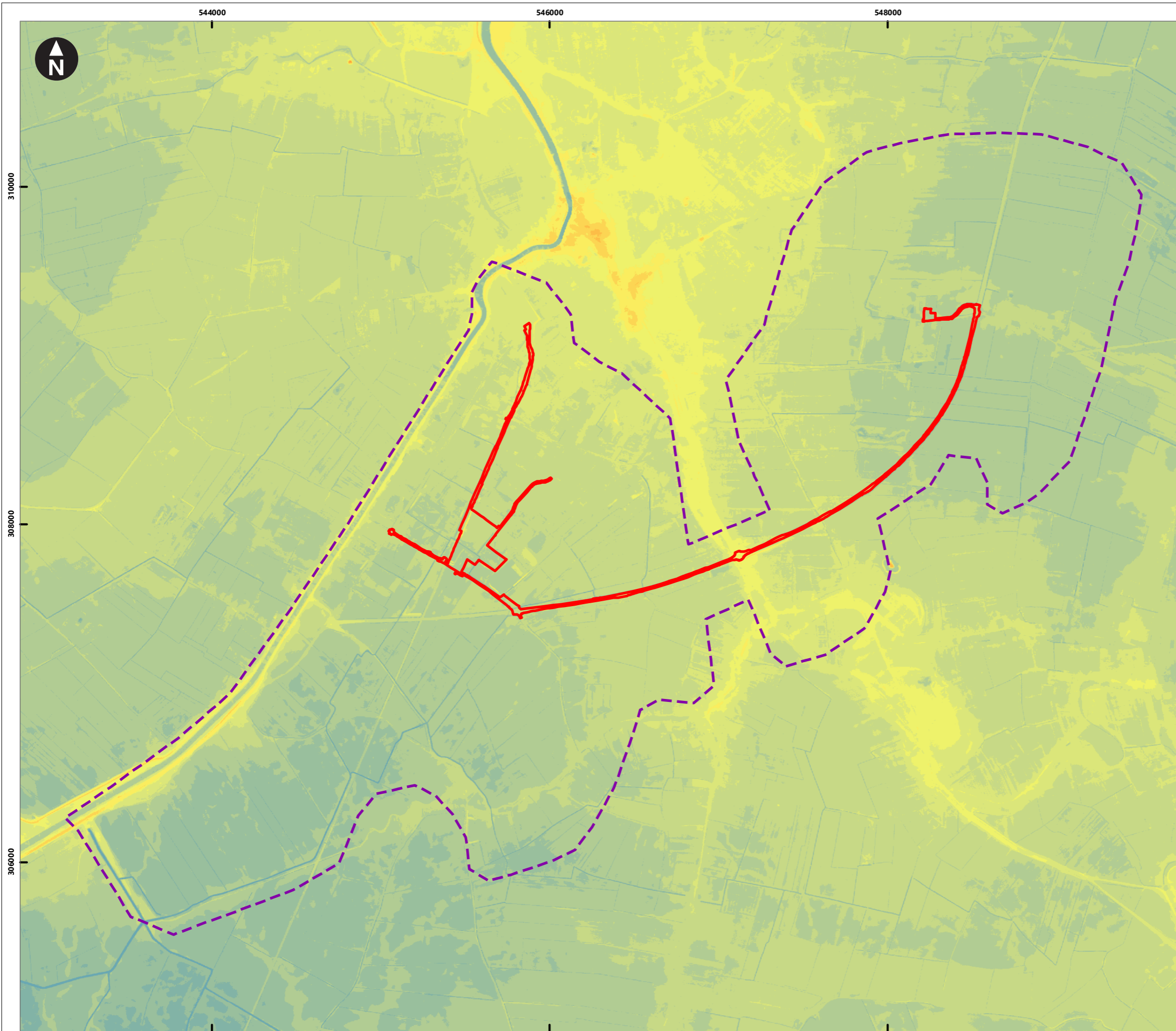


- Key
- Order limits
  - EfW CHP Facility Site
  - CHP Connection
  - Temporary Construction Compound
  - Grid Connection
  - Access Improvements
  - Water Connections
  - Study Area
  - Main River
  - Ponds
- King's Lynn IDB**
- Adopted watercourse
  - Culvert
- Hundred of Wisbech IDB**
- Adopted watercourse
  - Culvert



Medworth CHP Limited  
 Medworth Energy from Waste Combined Heat and Power Facility DCO  
 Environmental Statement  
 Chapter 12 - Hydrology

**Figure 12.1**  
**Proposed Development Location and Study Area**



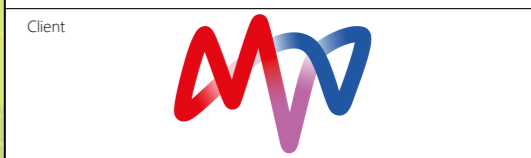
Key

- Order limits
- Study Area

**Elevation (mAOD)**

< -3
-3 - -2
-2 - -1
-1 - 0
0 - 1
1 - 2
2 - 3
3 - 4
4 - 5
5 - 6
6 - 7
7 - 8
8 - 9
9 - 10
10 - 11
11 - 12
12 - 13
> 13

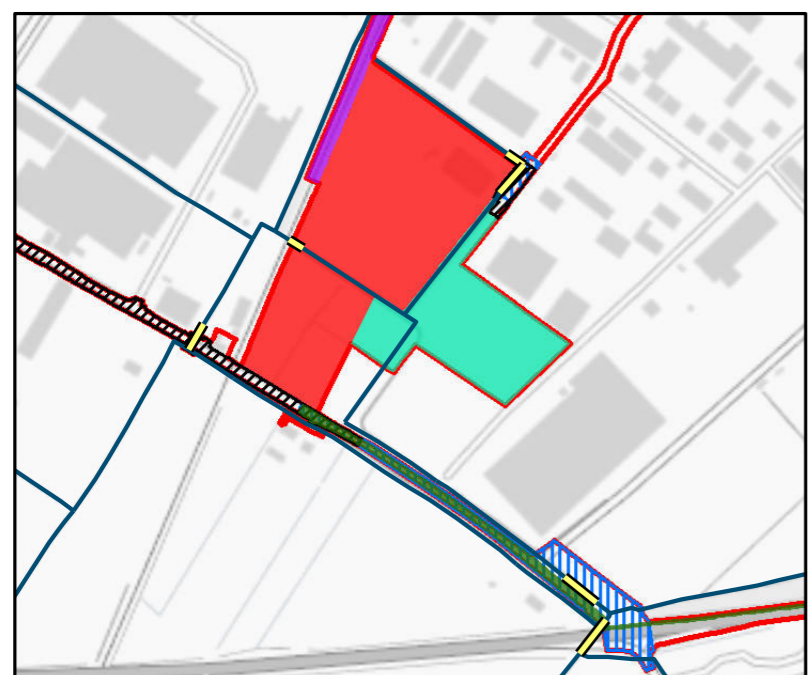
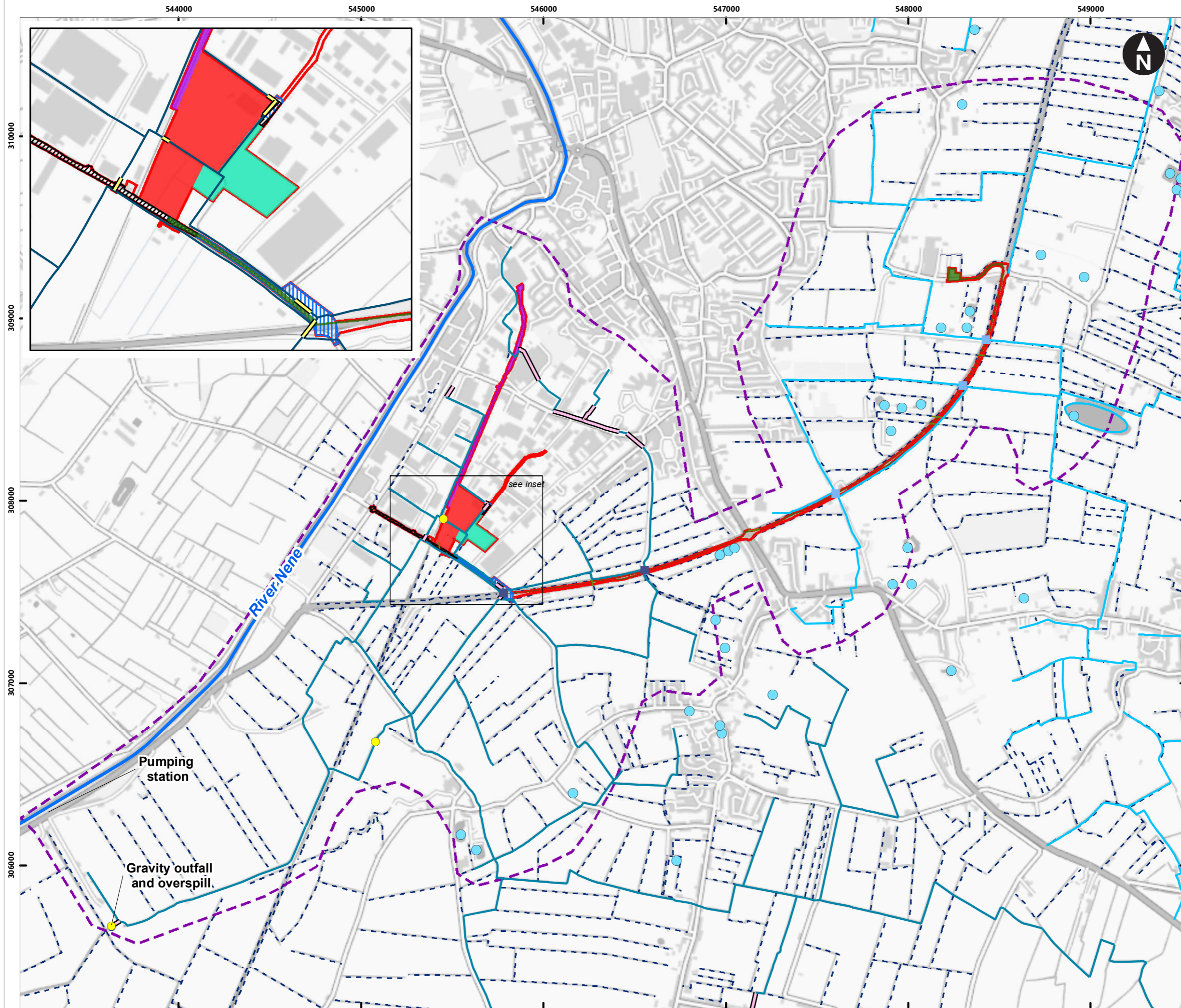
0 200 400 600 800 1,000 1,200 m  
Scale at A3: 1:22,000  
© Crown Copyright. All rights reserved. Licence number AL100001776.



Medworth CHP Limited  
Medworth Energy from Waste Combined Heat and Power Facility DCO  
Environmental Statement  
Chapter 12 - Hydrology

**Figure 12.2**  
**LiDAR topography elevations (Proposed Development)**

H:\Projects\41310 Wisbech\Design\_Technical - G:\Drawings\ArcGIS\Workspaces\41310-Shr420\_v2.mxd Originator: jacqui.parkin



**Key**

- Order limits
- EfW CHP Facility Site
- CHP Connection
- Temporary Construction Compound
- Grid Connection
- Access Improvements
- Water Connections
- Study Area
- Main River
- Ordinary Water Crossings
- Ordinary (non-IDB) watercourses

**King's Lynn IDB**

- Adopted watercourse
- Culvert
- Watercourse crossing (underground cable)

**Hundred of Wisbech IDB**

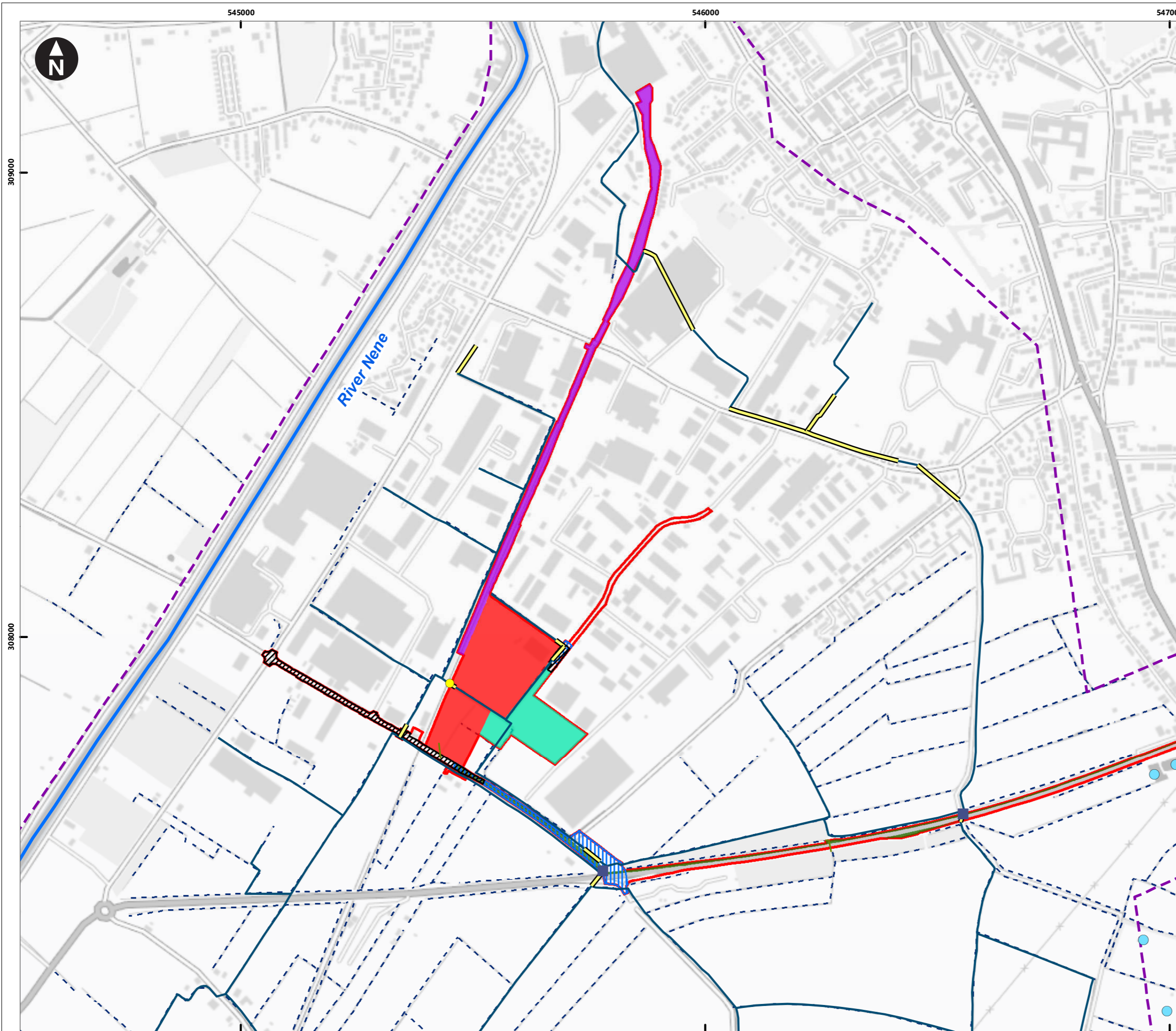
- Adopted watercourses
- Culverts
- Watercourse crossing (underground cable)
- Ponds
- Other structures

0 200 400 600 800 1,000 1,200 m  
Scale at A3: 1:20,000  
Contains OS data © Crown Copyright and database right 2020



Medworth CHP Limited  
Medworth Energy from Waste Combined Heat and Power Facility DCO  
Environmental Statement  
Chapter 12 - Hydrology

**Figure 12.3i**  
**Water environment (Proposed Development)**



Key

- Order limits
- EfW CHP Facility Site
- CHP Connection
- Temporary Construction Compound
- Grid Connection
- Access Improvements
- Water Connections
- Study Area
- Main River
- Ordinary Water Crossings
- Ordinary (non-IDB) watercourses

**King's Lynn IDB**

- Adopted watercourse
- Culvert
- Watercourse crossing (underground cable)

**Hundred of Wisbech IDB**

- Adopted watercourses
- Culverts
- Watercourse crossing (underground cable)
- Ponds
- Other structures

0 200 400 m  
Scale at A3: 1:8,000  
Contains OS data © Crown Copyright and database right 2020

Client

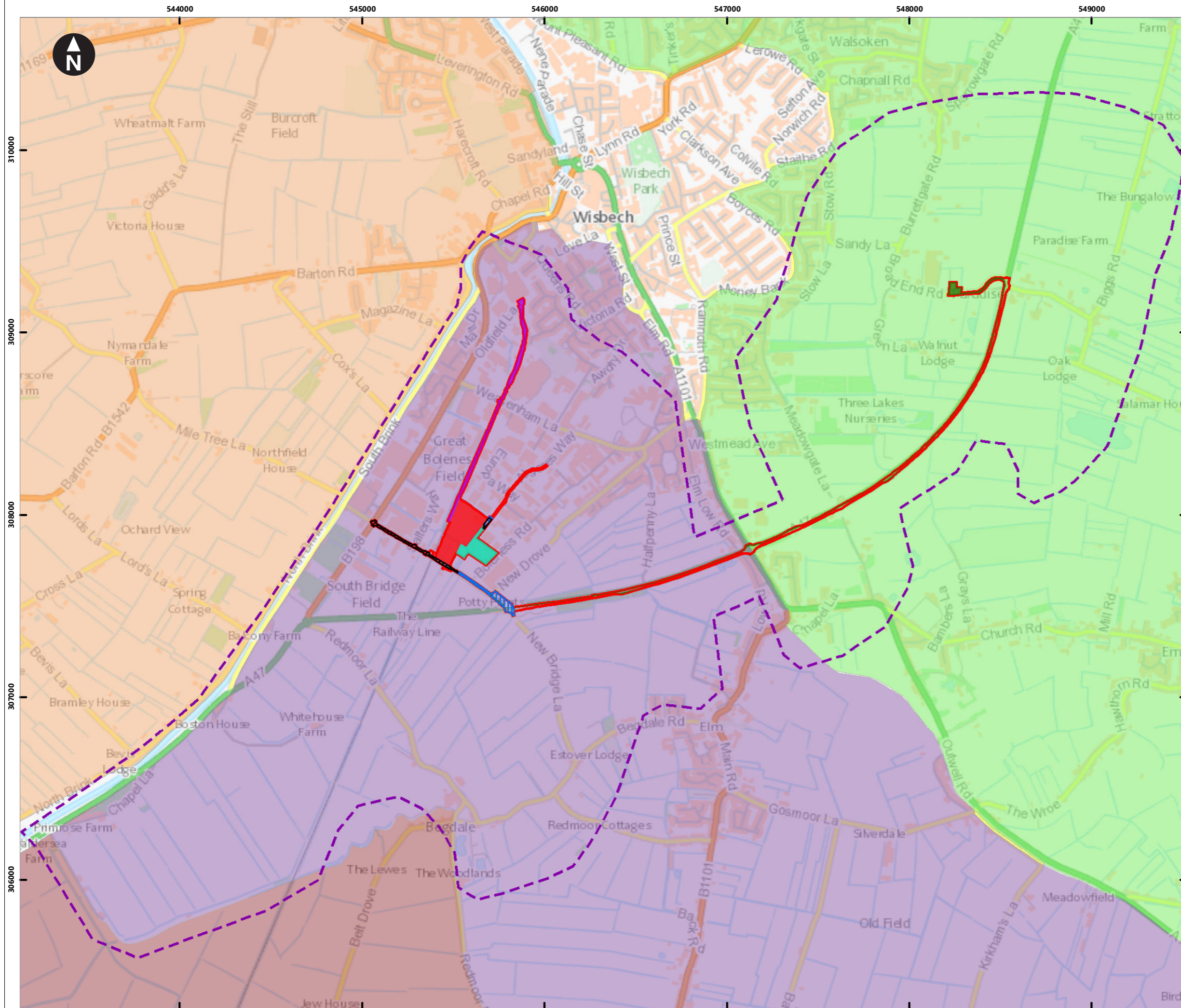


Medworth CHP Limited  
Medworth Energy from Waste Combined Heat and Power Facility DCO  
Environmental Statement  
Chapter 12 - Hydrology  
**Figure 12.3ii**  
**Water environment (EfW CHP Facility Site and surroundings)**

Junel 2022



H:\Projects\41310 Wisbech\Design\_Technical - GIS\Drawings\ArcGIS\Workspaces\41310-Shr422\_v2.mxd Originator: jacqui.parkin



Key

- Order limits
- EfW CHP Facility Site
- CHP Connection
- Temporary Construction Compound
- Grid Connection
- Access Improvements
- Water Connections
- Study Area

**Internal Drainage Board**

- Hundred of Wisbech
- Kings Lynn
- North Level
- Waldersey

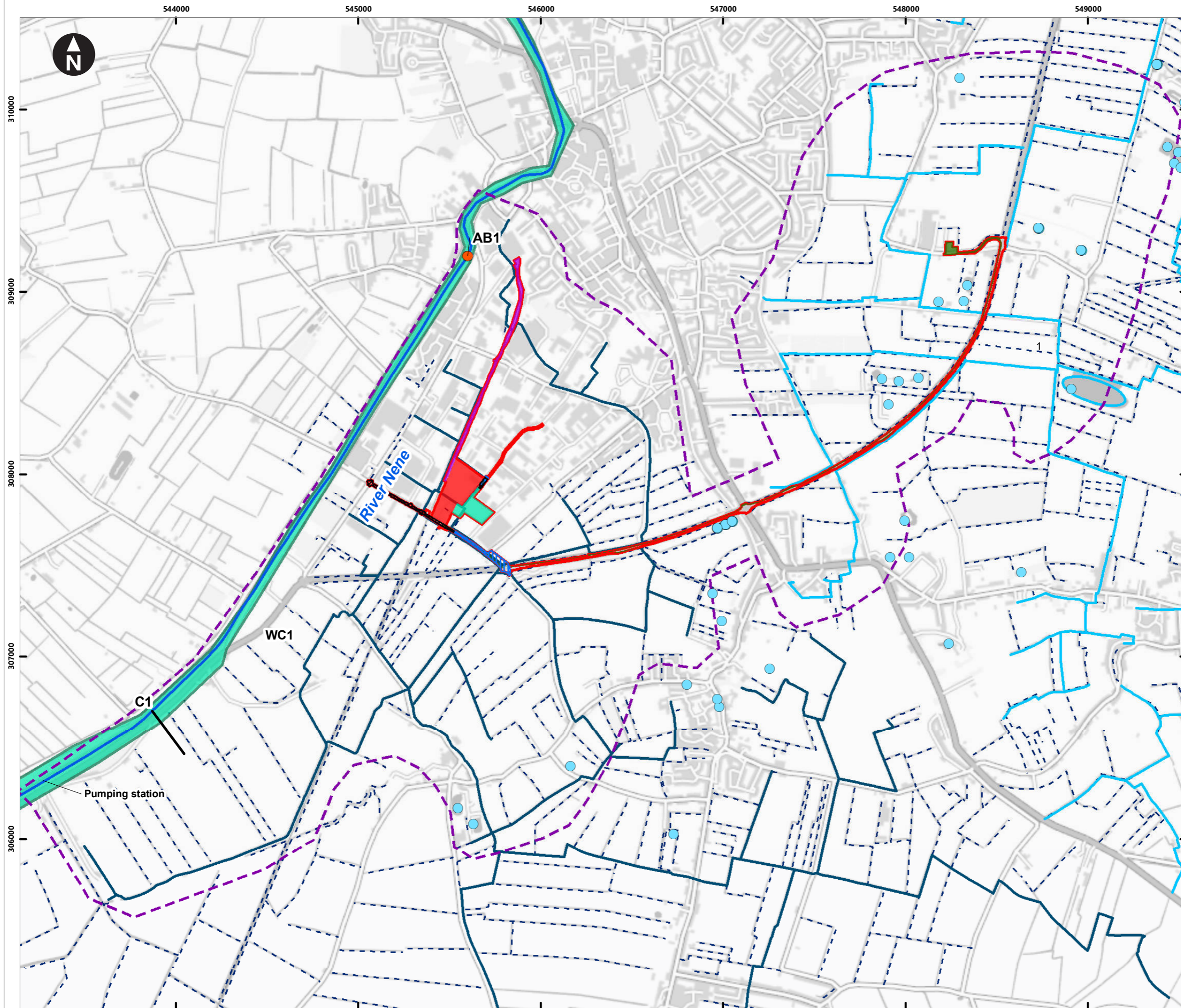
0 200 400 600 800 1,000 1,200 m  
Scale at A3: 1:20,000  
Contains OS data © Crown Copyright and database right 2020



Medworth CHP Limited  
Medworth Energy from Waste Combined Heat and Power Facility DCO  
Environmental Statement  
Chapter 12 - Hydrology

**Figure 12.4**  
**Internal Drainage Board Districts**

H:\Projects\41310 Wisbech\Design\_technical - G:\Drawings\ArcGIS\Workspaces\41310-Shr423\_v2.mxd Originator: jacqui.parkin



**Key**

- Order limits
- EfW CHP Facility Site
- CHP Connection
- Temporary Construction Compound
- Grid Connection
- Access Improvements
- Water Connections
- Study Area

**Receptors**

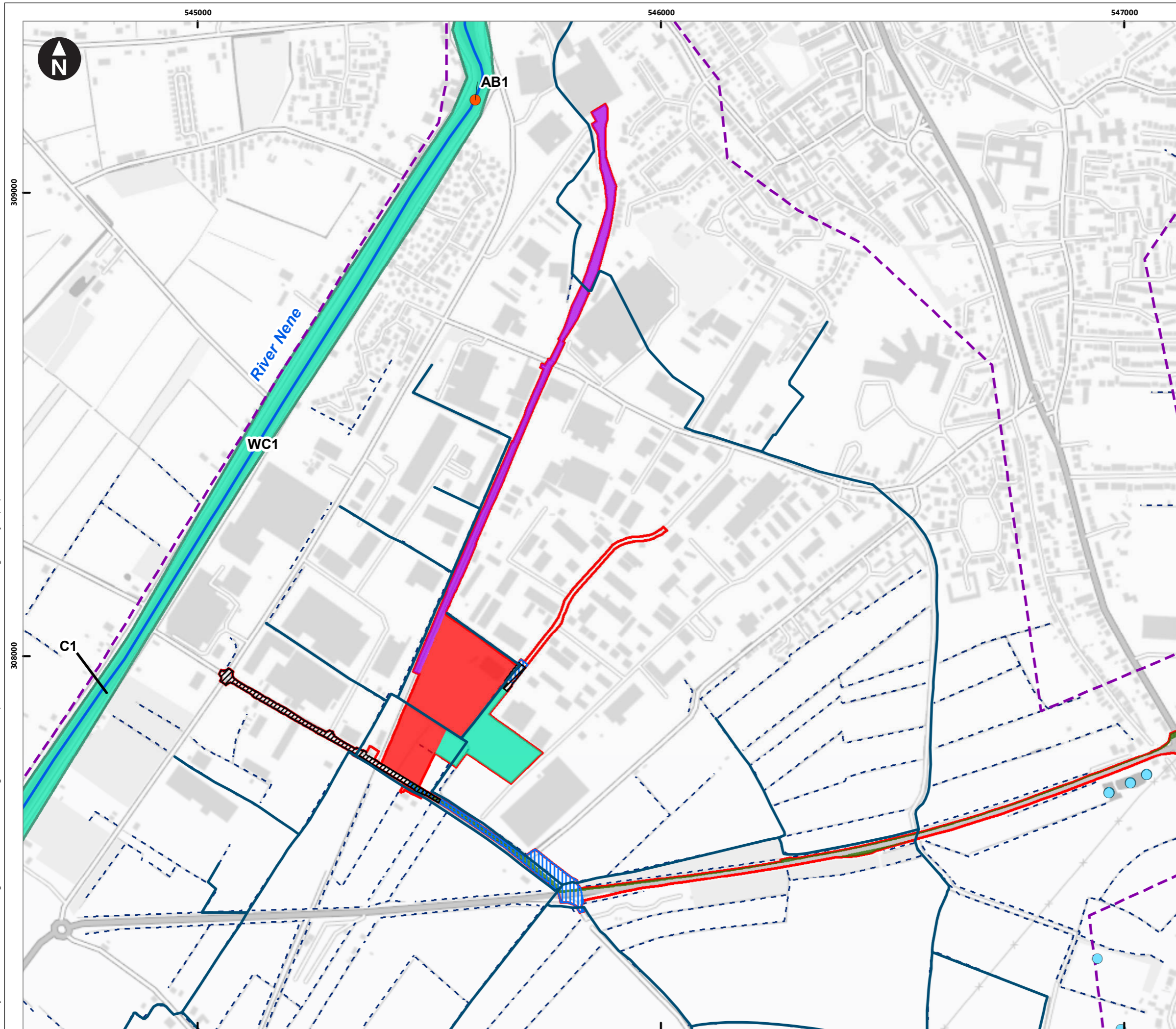
- AB - Water resource Receptors (abstractions)
- P - Aquatic environment Receptors (ponds and lakes)
- WC - Aquatic environment receptors (watercourses)
  - WC1 River Nene
  - WC2 Hundred of Wisbech IDB adopted drains
  - WC3 King's Lynn IDB adopted drains
  - Ordinary watercourses
- C - Aquatic environment receptors (nature conservation sites)
  - C3 River Nene CWS

0 200 400 600 800 1,000 1,200 m  
Scale at A3: 1:20,000  
Contains OS data © Crown Copyright and database right 2020



Medworth CHP Limited  
Medworth Energy from Waste Combined Heat and Power Facility DCO  
Environmental Statement  
Chapter 12 - Hydrology

**Figure 12.5i**  
**Hydrological receptors within the study area (Proposed Development)**



Key

- Order limits
- EfW CHP Facility Site
- CHP Connection
- Temporary Construction Compound
- Grid Connection
- Access Improvements
- Water Connections
- Study Area

**Receptors**

- AB - Water resource Receptors (abstractions)
- P - Aquatic environment Receptors (ponds and lakes)

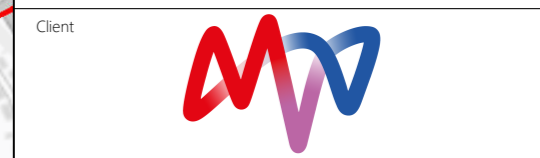
WC- Aquatic environment receptors (watercourses)

- WC1 River Nene
- WC2 Hundred of Wisbech IDB adopted drains
- WC3 King's Lynn IDB adopted drains
- - - Ordinary watercourses

C - Aquatic environment receptors (nature conservation sites)

- C3 River Nene CWS

0 200 400 m  
Scale at A3: 1:8,000  
Contains OS data © Crown Copyright and database right 2020

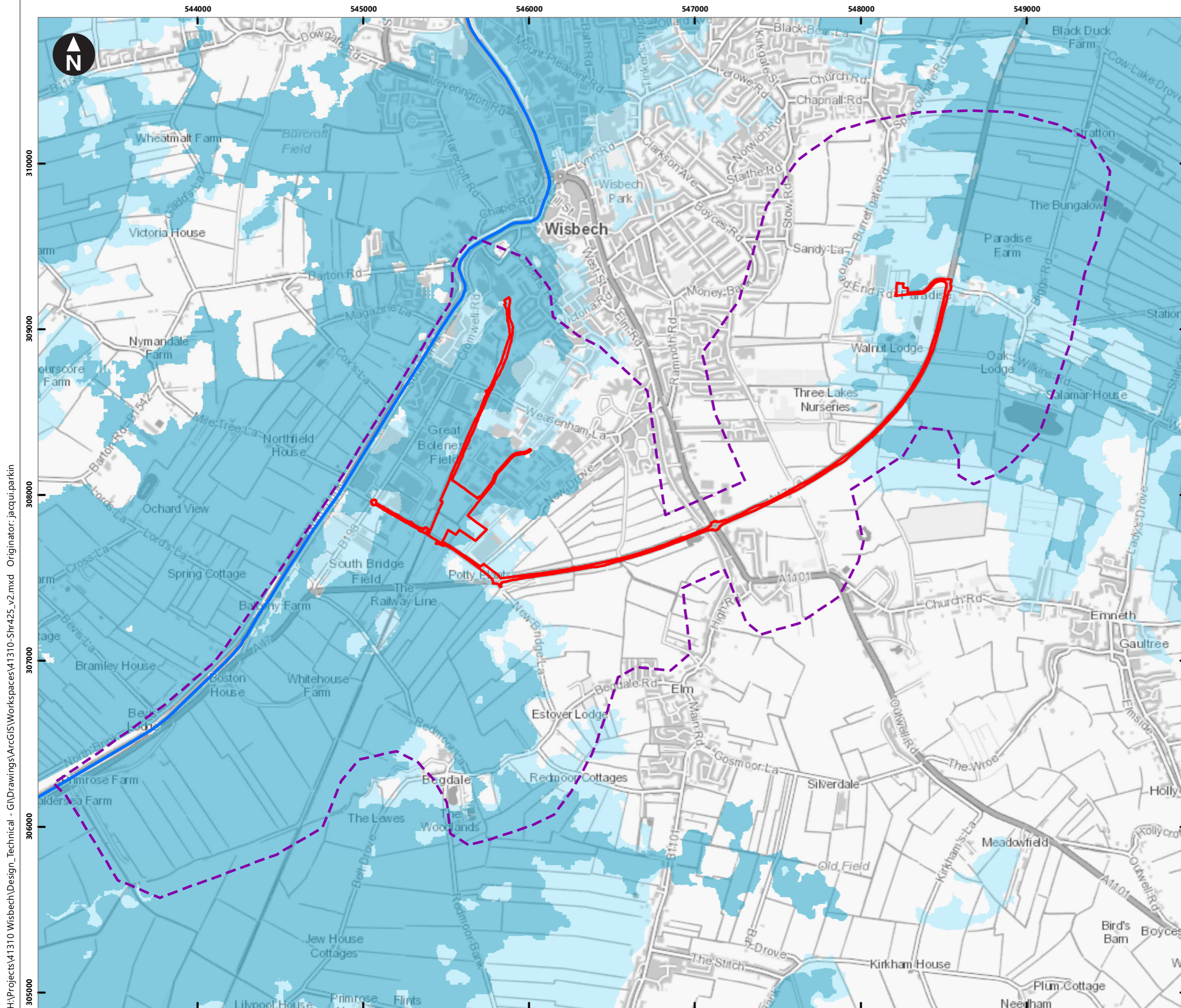


Medworth CHP Limited  
Medworth Energy from Waste Combined Heat and Power Facility DCO  
Environmental Statement  
Chapter 12 - Hydrology

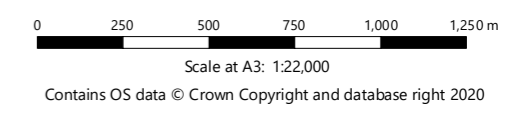
**Figure 12.5ii**  
**Hydrological receptors within the study area (EfW CHP Facility Site and surroundings)**

June 2022





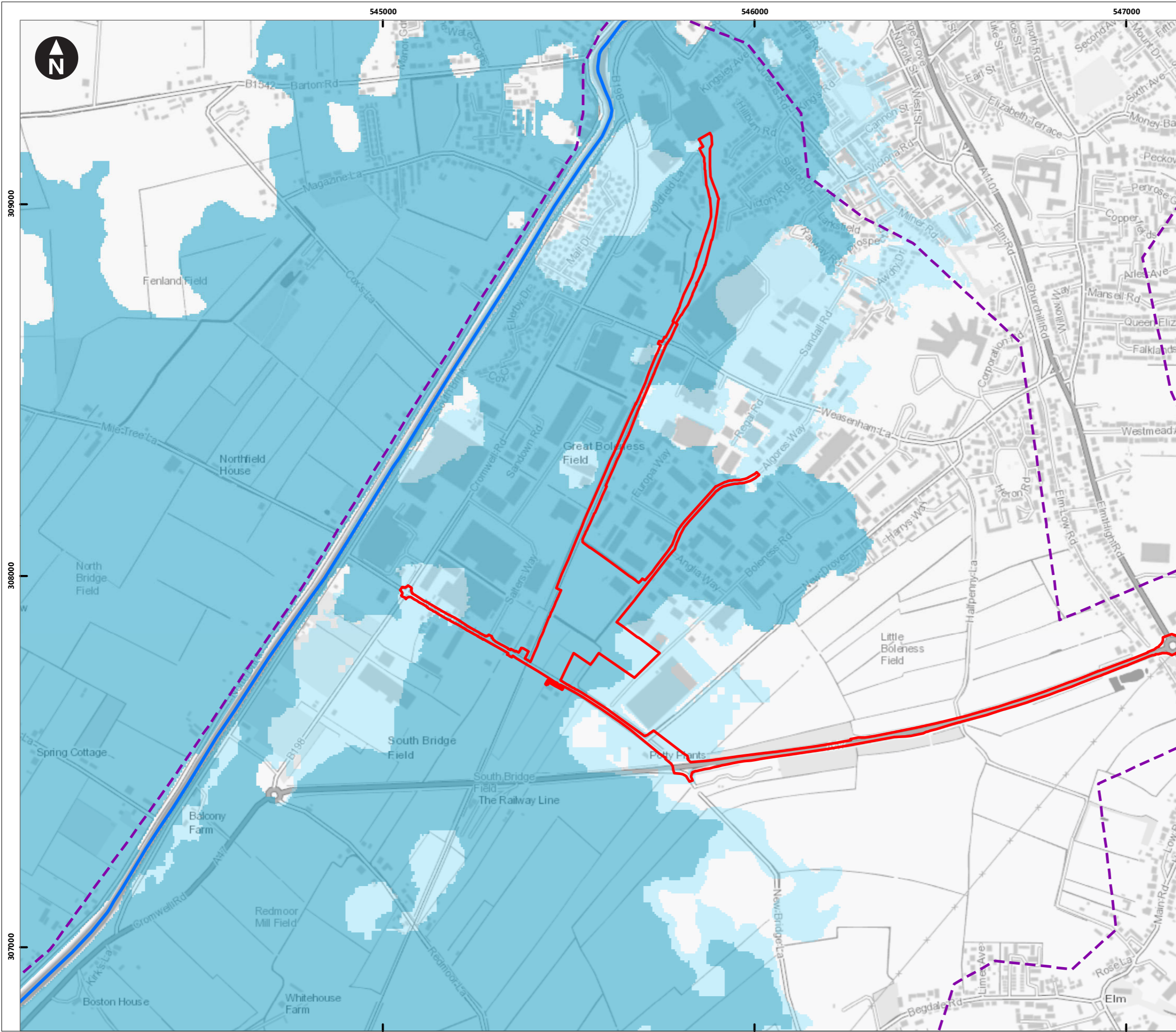
- Key
- Order limits
  - Study Area
  - Environment Agency Main River
  - Flood Zone 3
  - Flood Zone 2
  - Flood Zone 1



Medworth CHP Limited  
 Medworth Energy from Waste Combined Heat and Power Facility DCO  
 Environment Statement  
 Chapter 12 - Hydrology

**Figure 12.6i**  
**Environment Agency Flood Map for Planning (Proposed Development)**

H:\Projects\41310 Wisbech\Design\_Technical - G:\Drawings\ArcGIS\Workspaces\41310-Shr425\_v2.mxd Originator: jacqui.parkin



Key

- Order limits
- Study Area
- Environment Agency Main River
- Flood Zone 3
- Flood Zone 2
- Flood Zone 1

0 200 400 600 m  
Scale at A3: 1:10,000  
Contains OS data © Crown Copyright and database right 2020

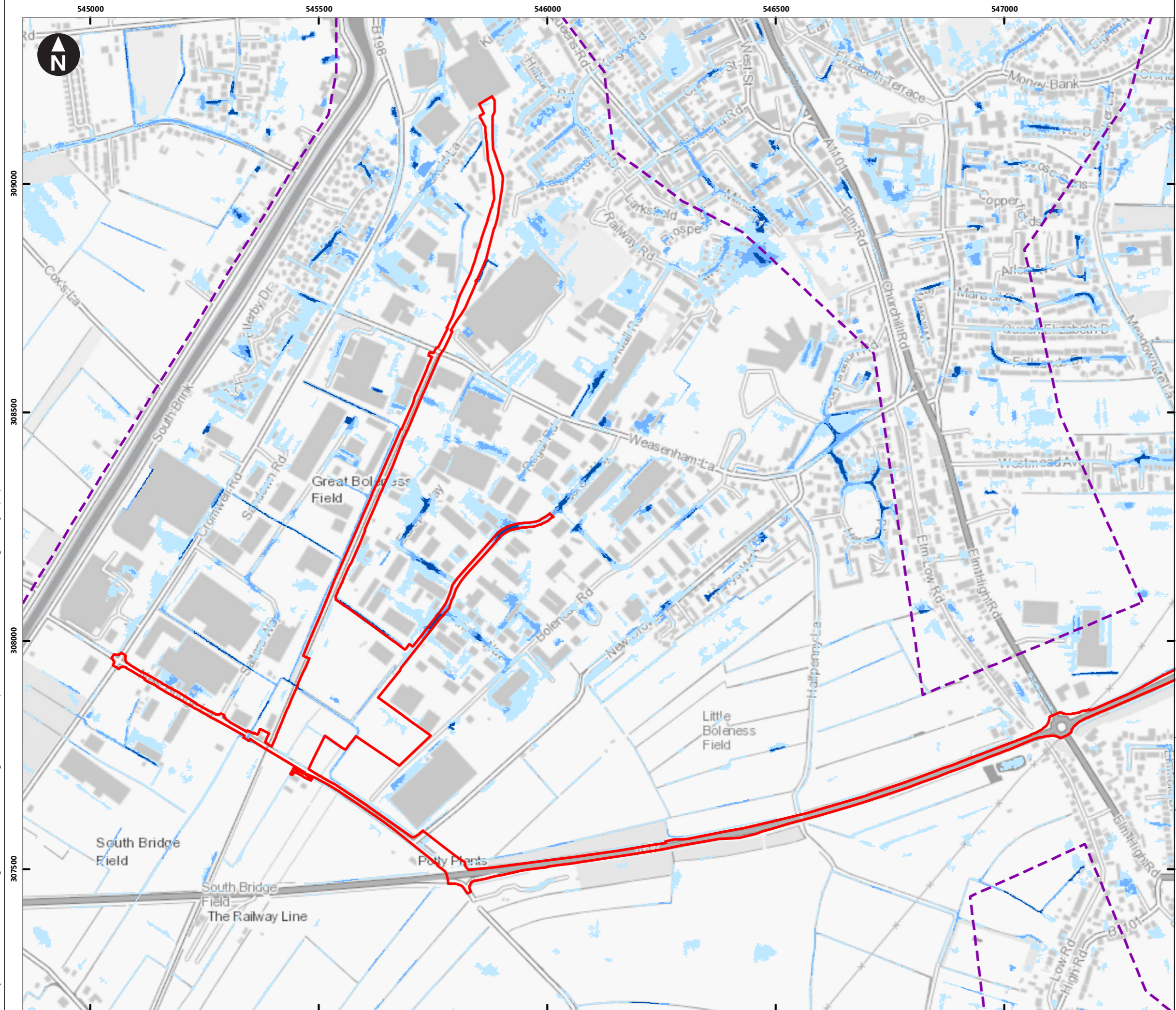
Client

Medworth CHP Limited  
Medworth Energy from Waste Combined Heat and Power Facility DCO  
Environment Statement  
Chapter 12 - Hydrology

**Figure 12.6ii**  
**Environment Agency Flood Map for Planning (EFW CHP Facility Site and surroundings)**

June 2022

H:\Projects\41310 Wisbech\Design\_Technical - G:\Drawings\ArcGIS\Workspaces\41310-Shr427\_v2.mxd Originator: jacqui.parkin



Key

- Order limits
- Study Area

**Risk of Flooding from Surface Water - Extent**

- > 3.33% AEP - High risk of surface water flooding
- 3.33% AEP to 1% AEP - Medium risk of surface water flooding
- 1% AEP to 0.1% AEP - Low risk of surface water flooding
- < 0.1% AEP - Very low risk of surface water flooding

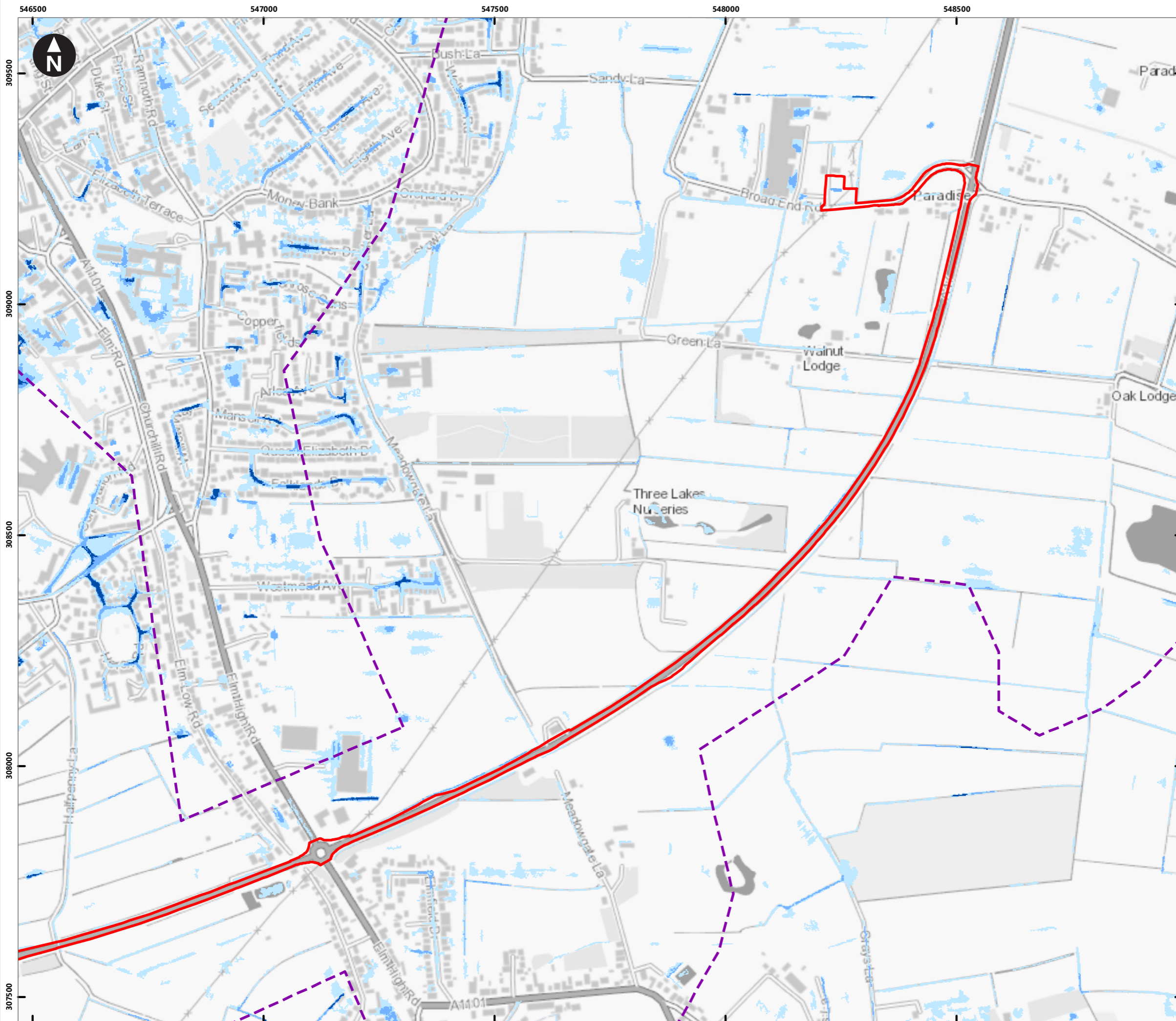
0 100 200 300 400 m  
Scale at A3: 1:8,000  
Contains OS data © Crown Copyright and database right 2020



Medworth CHP Limited  
Medworth Energy from Waste Combined Heat and Power Facility DCO  
Environmental Statement  
Chapter 12 - Hydrology

**Figure 12.7i**  
**Environment Agency Surface Water Flood Risk Map (EfW CHP Facility Site and surroundings)**

H:\Projects\41310\_Wisbech\Design\_Technical - G:\Drawings\ArcGIS\Workspaces\41310-Shr428\_v2.mxd Originator: jacqui.parkin



Key

- Order limits
- Study Area

**Risk of Flooding from Surface Water - Extent**

- > 3.33% AEP - High risk of surface water flooding
- 3.33% AEP to 1% AEP - Medium risk of surface water flooding
- 1% AEP to 0.1% AEP - Low risk of surface water flooding
- < 0.1% AEP - Very low risk of surface water flooding



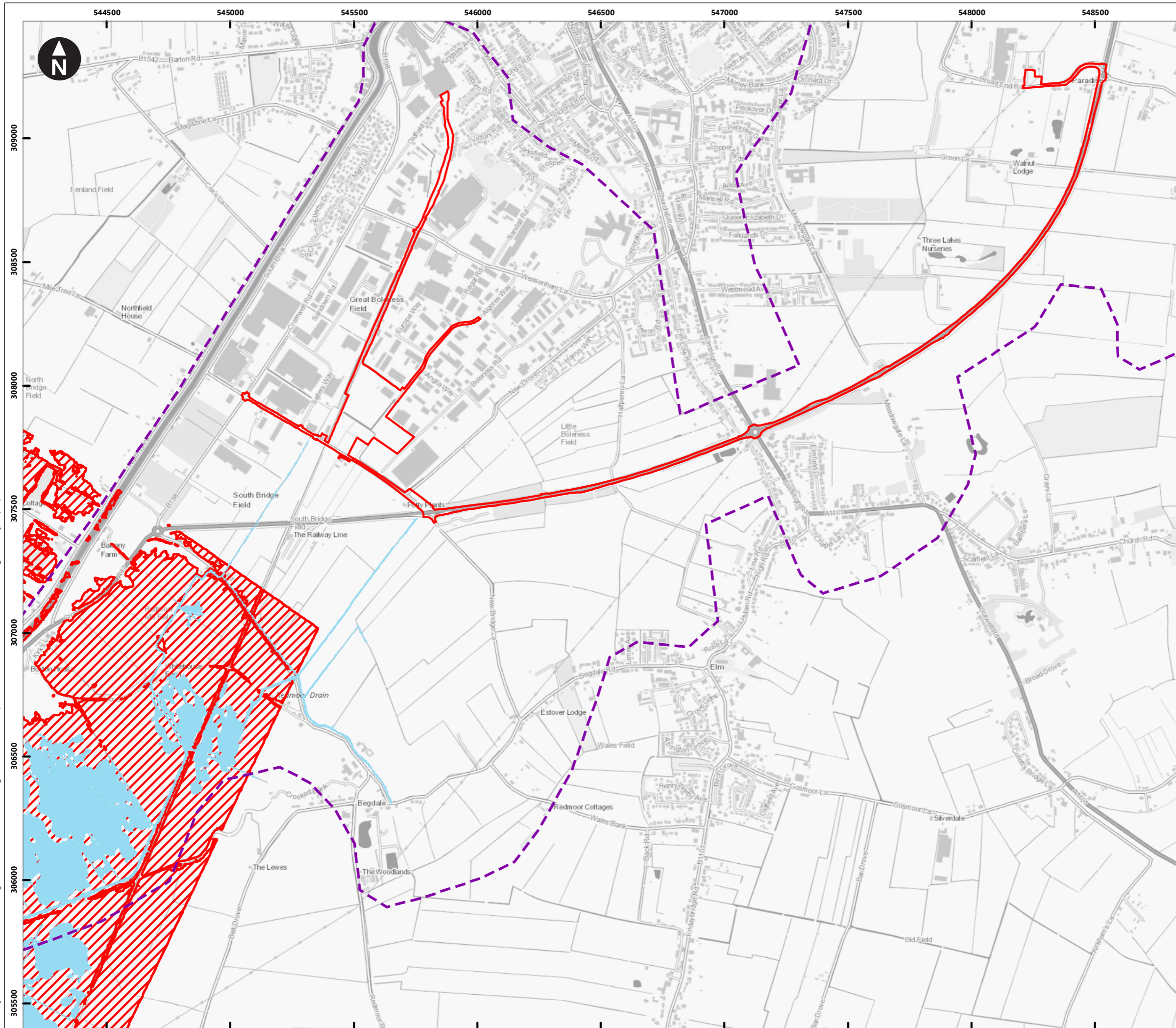
Scale at A3: 1:8,000  
Contains OS data © Crown Copyright and database right 2020



Medworth CHP Limited  
Medworth Energy from Waste Combined Heat and Power Facility DCO  
Environmental Statement  
Chapter 12 - Hydrology

**Figure 12.7ii**  
**Environment Agency Surface Water Flood Risk Map (Grid Connection)**

H:\Projects\41310 Wisbech\Design\_technical - GIS\Drawings\ArcGIS\Workspaces\41310-Shr429\_v2.mxd Originator: jacqui.parkin



- Key
- Order limits
  - Study Area

- Risk of Flooding from Reservoirs - Extent**
- Normal river levels
  - Also flooding from rivers



Scale at A3: 1:15,000  
Contains OS data © Crown Copyright and database right 2020



Medworth CHP Limited  
Medworth Energy from Waste Combined Heat and Power Facility DCO  
Environmental Statement  
Chapter 12 - Hydrology

**Figure 12.8**  
**Environment Agency Reservoir Flood Risk Map**

